

Lafferty Equipment Manufacturing, LLC Installation & Operation Instructions

Model # 535531SS · Wand, SS, Airless Foam, PF31SS

REQUIREMENTS / SPECIFICATIONS

Requires RTU Chemical Solution

Temperature	up to 160°F
Pressure	40-125 PSI

Solution Flow Rate

#5361106-6 #6 Bullet Foam Nozzle, 1/2" FPT 0.6 GPM @ 40 PSI

#5361110-6 #10 Bullet Foam Nozzle, 1/2" FPT 1.0 GPM @ 40 PSI

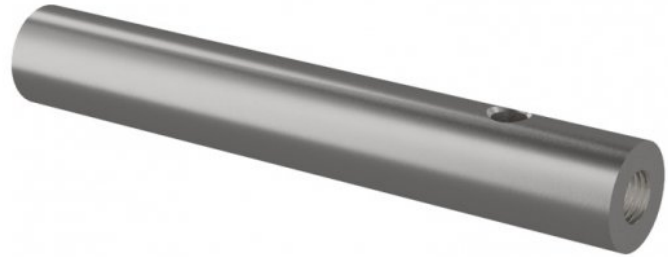
#535539 Wand, PP, Airless Foam, PF39 1.5 GPM @ 40 PSI

#535531 Wand, PP, Airless Foam, PF31 2.0 GPM @ 40 PSI

#536619 Wand, PP, Airless Foam, PF314 3.8 GPM @ 40 PSI

#536621 Wand, PP, Airless Foam, PF316 6.3 GPM @ 40 PSI

#536622 Wand, PP, Airless Foam, PF416 8.0 GPM @ 60 PSI



www.laffertyequipment.com

501-851-2820

**WARNING! READ ALL
INSTRUCTIONS BEFORE
USING EQUIPMENT!**

OVERVIEW

Pump Fed Airless Foam wands are designed for use with ready-to-use chemical solution supplied by a pump or central chemical feed system at 40-125 PSI. Chemical solution flows through the airless foam wand which draws in atmospheric air to create and project wet clinging foam.

PREVENTIVE MAINTENANCE: When the unit will be out of service for extended periods, place chemical tube(s) in water and flush the chemical out of the unit to help prevent chemical from drying out and causing build-up. Periodically check and clean chemical strainer and replace if missing.

