

Timed PF Entryway XV Foam Sanitizer

MODEL # 976260

OVERVIEW

The Timed PF Entryway XV Foam Sanitizer is an automated foam applicator for projecting sanitizing chemicals on to floors of 8' - 16' wide overhead doors to prevent cross contamination. This system receives ready-to-use chemical solution from a user-supplied central chemical feed system. A high volume of rich, clinging foam is created by injecting compressed air into the solution to greatly increase volume and coverage ability. The foam is then projected through the discharge hose and unique Spreader™ nozzles. The system timer is user-programmable to meet the needs of any facility.

Key Features

- Applies a layer of rich, clinging foam to entryway floors to prevent cross-contamination
- Designed for 8'-16' wide overhead doors
- Receives pre-diluted chemical solution from a user-supplied central chemical feed system
- The unique Spreader™ nozzles lay a foam pattern 8'-16' across and up to 10' wide to ensure that all foot traffic and cart wheels are fully exposed to the sanitizer
- Automatic activation and shutoff for use in moderate to high traffic areas
- Adjustable timer controls the application of foam at regular intervals - up to 1 minute foaming and up to 1 hour off
- Adjustable foam consistency (wet/dry)
- Chemical resistant wetted components ensure durability and years of reliable service with minimal maintenance
- Available for smaller doors (#976250, 976256)
- Available for 24VAC electric (#976260-24V)
- See [Catalog 6](#) for other entryway configurations

Includes

- Stainless steel mounting plate
- NEMA rated control box with run/delay timer
- Solution activation solenoid
- Machined polypropylene pump-fed foamer body
- Foam enhancer
- 10' discharge hose
- (2) HV Entryway Spreader™ nozzles (must use both)

OPTIONS

Central Pump Systems (AODD)

Mini-Central Pump System (1/2" PP)	# 919050
Central Pump System (1" SS)	# 919060SS

Level Masters Provide an Automatic Supply of Ready-to-Use Chemical

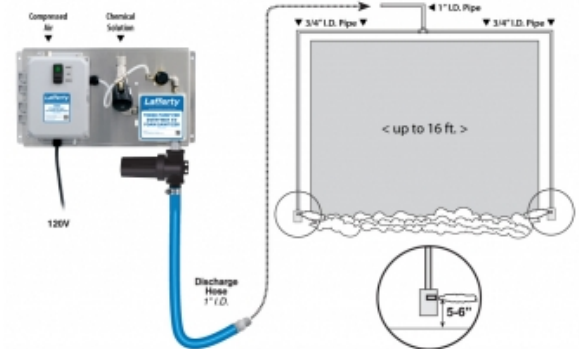
Level Master (Various Tank Sizes)	# 989304
Gemini Level Master (Various Tank Sizes)	# 989316

High Flow Level Masters Provide an Automatic Supply of Ready-to-Use Chemical

60/10 High Flow Level Master	# 989106
60/20 High Flow Level Master	# 989108

Control Box Upgrades (Specify at Time of Purchase)

Photocell Activation Upgrade	# 976003EE
Push Button Activation Upgrade	# 976003PB



REQUIREMENTS

Ready-to-Use Chemical Solution

Temperature	up to 160°F
Pressure	35 to 100 PSI
Flow	4 GPM @ 40 PSI
Supply Line	1/2" Min

Compressed Air

up to 6 CFM

Hose/Pipe

1" & 3/4" ID

Nozzle

HV Entryway Spreader (2 - use both)

Electric

120V

APPLICATIONS

- Agriculture/Horticulture
- Animal Health
- Food & Beverage
- Hatchery
- School Hygiene
- Pharm/Bio
- And Many Other Applications!

