

Timed Entryway HV Foam Sanitizer

MODEL # 976560

OVERVIEW

The Timed Entryway HV Foam Sanitizer is an automated foam applicator for projecting sanitizing chemicals on to floors of 8' - 16' wide overhead doors to prevent cross contamination. When activated, this venturi injection system uses city water pressure (35 - 125 PSI) to draw and blend chemical concentrate into the water stream to create an accurately diluted solution. A high volume of rich, clinging foam is created by injecting compressed air into the solution to greatly increase volume and coverage ability. The foam is then projected through the discharge hose and unique Spreader™ nozzles. The system timer is user-programmable to meet the needs of any facility.

Key Features

- Applies a layer of rich, clinging foam to entryway floors to prevent cross-contamination
- Designed for 8'-16' wide overhead doors
- Dilutes chemical concentrate "on-the-fly" from a container near the unit
- The unique Spreader™ nozzles lay a foam pattern 8'-16' across and up to 10' wide to ensure that all foot traffic and cart wheels are fully exposed to the sanitizer
- Automatic activation and shutoff for use in moderate to high traffic areas
- Adjustable timer controls the application of foam at regular intervals - up to 1 minute foaming and up to 1 hour off
- Adjustable foam consistency (wet/dry)
- Chemical resistant wetted components ensure durability and years of reliable service with minimal maintenance
- Available for smaller doors (#976500, 976530)
- Available for 24VAC electric (#976560-24V)
- See [Catalog 6](#) for other entryway configurations

Includes

- Stainless steel mounting plate
- NEMA rated control box with run/delay timer
- Water activation solenoid
- Machined polypropylene foamer body
- 20 color-coded precision metering tips to set dilution ratios
- Foam enhancer
- 10' discharge hose
- (2) HV Entryway Spreader™ nozzles (must use both)

OPTIONS

Stainless Steel Jug Racks

2 ½ Gallon (8 ½" x 10 ½")	# 224210
5 Gallon Round/Square Locking (12" x 12")	# 224214
5 Gallon Round/Square (12" x 12")	# 224215

Control Box Upgrades (Specify at Time of Purchase)

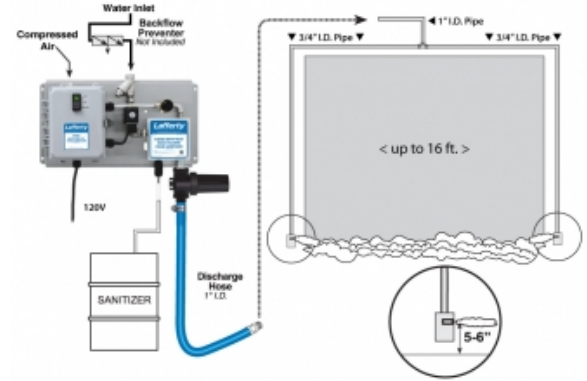
Photocell Activation Upgrade	# 976001EE
Push Button Activation Upgrade	# 976001PB

Dual Pick-up Assembly

HV Entryway Dual Chemical Pick-up Assembly	# 976013
--	----------

Alternate Chemical Check Valve - Viton Standard

Check Valve, Chemical, PP(W), 1/4" (EPDM)	# 491401
---	----------



REQUIREMENTS

Chemical Concentrate

Water

Temperature	up to 160°F
Pressure	35-125 PSI
Flow	4 GPM @ 40 PSI
Supply Line	3/4" Min

Compressed Air

up to 5 CFM

Hose/Pipe

1" & 3/4" ID

Nozzle

HV Entryway Spreader (2 - use both)

Electric

120V

Dilution Ratio Range

914:1 to 6:1 @ 40 PSI

APPLICATIONS

- Agriculture/Horticulture
- Animal Health
- Dairy
- Food & Beverage
- Hatchery
- Pharm/Bio
- And Many Other Applications!