

Satellite Entryway HV Foam Sanitizer

MODEL # 976652

OVERVIEW

The Satellite Entryway HV Foam Sanitizer is an automated foam applicator for projecting sanitizing chemicals on to floors of 8'-16' wide/overhead doors to prevent cross contamination. When activated, this venturi injection system uses city water pressure (35 - 125 PSI) to draw and blend chemical concentrate into the water stream to create an accurately diluted solution. Rich, clinging foam is created by injecting compressed air into the solution to greatly increase volume and coverage ability. Foam is then projected through the discharge hose and Spreader™ nozzle. Up to 10 Satellite units are activated and operated by compressed air from a timed Entryway Satellite Controller - no electrical connection is required at the entryway location. All units will activate and deactivate at the same time.

Key Features

- Applies a layer of rich, clinging foam to entryway floors to prevent cross-contamination
- Designed for 8'-16' wide/overhead doors
- Dilutes chemical concentrate "on-the-fly" from a container near the unit
- The unique HV Spreader™ nozzles lay a foam pattern 8'-16' across and up to 10' wide to ensure all foot traffic and cart wheels are fully exposed to the sanitizer
- Automatic activation and shutoff for use in moderate to high traffic areas
- Activated and operated by compressed air from the Satellite Controller - no electrical connection required at the entryway door.
- Adjustable foam consistency (wet/dry)
- Chemical resistant wetted components ensure durability and years of reliable service with minimal maintenance
- Choice of two Satellite Controllers:
 - **Timed Entryway Satellite Controller** - An adjustable recycle timer applies foam at regular, timed intervals.
 - **PLC Jazz Entryway Satellite Controller** - A pre-programmed PLC Controller allows variable settings for hours of operation and peak traffic demands.
- Available for smaller doors (#976650, 976651)
- See [Catalog 6](#) for other entryway configurations

Includes

- Stainless steel mounting plate
- Water activation solenoid
- Machined polypropylene foamer body
- Color-coded precision metering tips to set dilution ratios
- Foam enhancer
- 10' discharge hose
- (2) HV Entryway Spreader™ nozzles (must use both)

OPTIONS

Stainless Steel Jug Racks

2 ½ Gallon (8 ½" x 10 ½")	# 224210
5 Gallon Round/Square Locking (12" x 12")	# 224214
5 Gallon Round/Square (12" x 12")	# 224215

Regulate the Operation of Multiple Satellite Entryway Foam Sanitizers

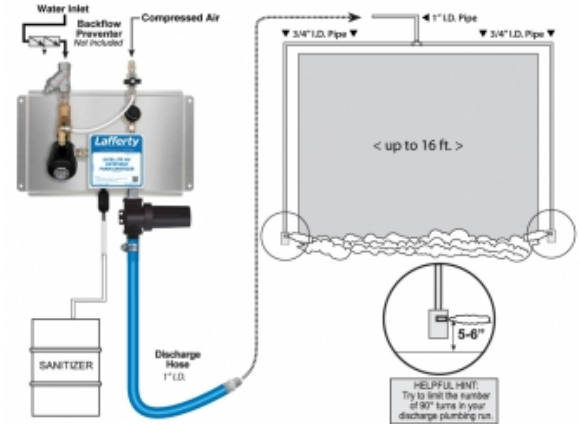
Timed Entryway Satellite Controller (120V)	# 976625
Timed Entryway Satellite Controller (24V)	# 976625-24V
PLC Jazz Entryway Satellite Controller (120V)	# 976630
PLC Jazz Entryway Satellite Controller (24V)	# 976630-24V

Dual Pick-up Assembly

HV Entryway Dual Chemical Pick-up Assembly	# 976013
--	----------

Alternate Chemical Check Valve - Viton Standard

Check Valve, Chemical, PP(W), 1/4" (EPDM)	# 491401
---	----------



REQUIREMENTS

Chemical Concentrate

Water

Temperature	up to 160°F
Pressure	35-125 PSI
Flow	4 GPM @ 40 PSI
Supply Line	3/4" Min

Compressed Air

up to 5 CFM

Hose/Pipe

1" & 3/4" ID

Nozzle

HV Entryway Spreader (2 - use both)

Dilution Ratio Range

914:1 to 6:1 @ 40 PSI

APPLICATIONS

- Agriculture/Horticulture
- Animal Health
- Food & Beverage
- Hatchery
- Pharm/Bio
- And Many Other Applications!