

DART™ EP-PD Spray System

MODEL # 977881

OVERVIEW

The DART™ EP-PD Spray System is a push button activated, time delayed, asphalt release applicator that mounts to a user-supplied drive-through arch for spraying asphalt release agent onto truck beds. This system uses an electric pump to draw ready-to-use chemical solution from a user-supplied tank. When the system is activated, a delay timer allows the driver to position the truck under the spray nozzle before applying release agent. When run time expires, the system shuts down and resets.

Key Features

- Designed to spray asphalt release chemicals on to truck beds from a nozzle that attaches to an existing drive-through spray bar
- The electric pump draws ready-to-use chemical solution from a user-supplied tank
- The push button activated, adjustable, single-shot timer will delay for up to 60 seconds, allowing the driver to get in position, and then apply chemical for up to 60 seconds before shutting off
- The driver remains in his cab and avoids the risk of slip-and-fall injury and chemical waste
- Evenly coats the truck bed in just seconds, reducing run-off and chemical waste
- Chemical resistant wetted components ensure years of outstanding performance with minimal maintenance
- See other Lafferty asphalt release equipment and industrial chemical applicators in [Catalog 8](#)

Includes

- Lockable, stainless steel pump enclosure
- 110V stainless steel electric pump
- Control box with delay/run timers and remote push button
- 40' discharge hose with custom fan spray nozzle

OPTIONS

Heater Assembly

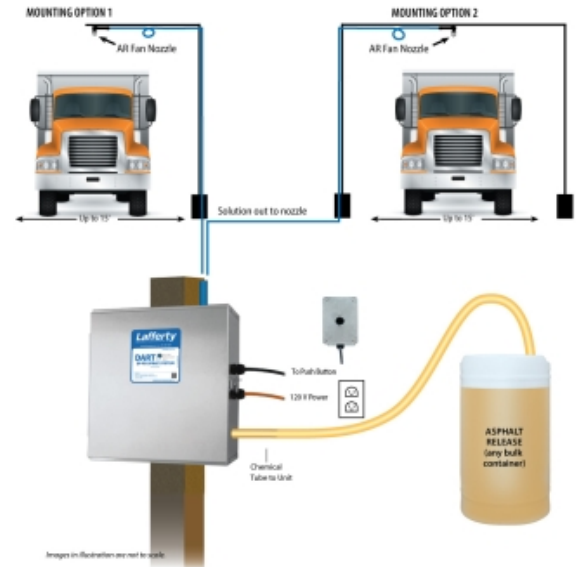
Retro-Fit Heater Assembly # 720981

Drum & Tote Stick Lengths & Seal Materials

Drum Stick, 33" (Viton or EPDM)	# 491643 / 491643-E
Drum Stick, 48" (Viton or EPDM)	# 491648 / 491648-E
Drum Stick, 54" (Viton or EPDM)	# 491645 / 491645-E
Tote Stick, 33" (Viton or EPDM)	# 491653 / 491653-E
Tote Stick, 48" (Viton or EPDM)	# 491654 / 491654-E
Tote Stick, 54" (Viton or EPDM)	# 491656 / 491656-E



Asphalt Release Spray Nozzle Assembly
Provides a coarse, wide fan spray pattern for quick, complete coverage.



DART™ DRIVE THRU ASPHALT RELEASE, TIMED

REQUIREMENTS

Ready-to-Use Chemical Solution

Hose	3/4" ID x 40'
Nozzle	#180193SS
Electric	120V / 20A