

Timed Entryway Foam Sanitizer - 24VAC

MODEL # 976500-24V

OVERVIEW

The Timed Entryway Foam Sanitizer (24V) is an automated foam applicator for projecting sanitizing chemicals on to floors of 3' wide employee walk doors to prevent cross contamination. When activated, this venturi injection system uses city water pressure (35 - 125 PSI) to draw and blend chemical concentrate into the water stream to create an accurately diluted solution. Rich, clinging foam is created by injecting compressed air into the solution to greatly increase volume and coverage ability. Foam is then projected through the discharge hose and Spreader™ nozzle. The system timer is user-programmable to meet the needs of any facility. This unit requires 24VAC electrical input - a locally sourced standard step-down transformer is required.

Key Features

- Applies a layer of rich, clinging foam to entryway floors to prevent cross-contamination
- Designed for 3' wide employee walk doors
- Dilutes chemical concentrate "on-the-fly" from a container near the unit
- The unique Spreader™ nozzle lays a foam pattern 3' across and 4' wide to ensure all foot traffic and cart wheels are fully exposed to the sanitizer
- Automatic activation and shutoff for use in moderate to high traffic areas
- Adjustable timer controls the application of foam at regular intervals - up to 1 minute foaming and up to 1 hour off
- Adjustable foam consistency (wet/dry)
- Chemical resistant wetted components ensure durability and years of reliable service with minimal maintenance
- Available for larger doors (#976530-24V, 976560-24V)
- Available for 120VAC electric (#976500)
- See [Catalog 6](#) for other entryway configurations

Includes

- Stainless steel mounting plate
- 24VAC, NEMA rated control box with run/delay timer
- Water activation solenoid
- Machined polypropylene foamer body
- 20 color-coded precision metering tips to set dilution ratios
- Foam enhancer
- 10' discharge hose
- Entryway Spreader™ nozzle

OPTIONS

Stainless Steel Jug Racks

2 ½ Gallon (8 ½" x 10 ½")	# 224210
5 Gallon Round/Square Locking (12" x 12")	# 224214
5 Gallon Round/Square (12" x 12")	# 224215

24V Control Box Upgrades (Specify at Time of Purchase)

Photocell Activation Upgrade	# 976001EE-24V
Push Button Activation Upgrade	# 976001PB-24V

Dual Pick-up Assembly

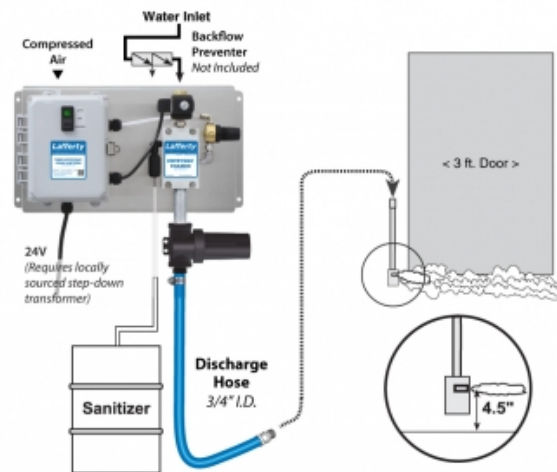
Entryway Dual Chemical Pick-up Assembly	# 976012
---	----------

Alternate Chemical Check Valve - Viton Standard

Check Valve, Chemical, PP(W), 1/4" (EPDM)	# 491401
---	----------

APPLICATIONS

- Food & Beverage
- Agriculture/Horticulture
- Animal Health
- School Hygiene
- Industrial
- Pharm/Bio
- And Many Other Applications!



REQUIREMENTS

Chemical Concentrate

Water

Temperature	up to 160°F
Pressure	35 to 125 PSI
Flow	1.34 GPM @ 40 PSI
Supply Line	1/2"

Compressed Air

up to 3 CFM

Hose

3/4" ID x 10'

Nozzle

Entryway Spreader

Electric

24V

Dilution Ratio Range

306:1 to 6:1 @ 40 PSI