

Model 20 SS Bypass 4-Way Airless Foam/Spray System (NO HOSE)

MODEL # 969754

OVERVIEW

Designed for 3.5–5.5 GPM pressure washers. The Model 20 SS Bypass 4-Way Airless Foam/Spray System is a wash/rinse system for quickly diluting and applying chemicals and rinsing through the same hose. This venturi unit draws and blends four separate chemicals or four different concentrations of the same chemical into the water stream to create an accurately diluted solution. The solution then flows through the hose and gun to the airless foam wand which draws in atmospheric air to create and project wet, clinging foam on to surfaces up close or at distances up to 25 feet with interchangeable fan and zero degree nozzles. Quick connect the fan pattern sprayer nozzle to apply non-foaming chemicals. Open the bypass ball valve to rinse at full volume and pressure.

Key Features

- Designed for use with 3.5–5.5 GPM pressure washers
- Applies 4 separate chemicals or 4 different concentrations of the same chemical
- Draws chemical out of any container and accurately dilutes to the required ratio (7:1 and leaner)
- Quick connect the airless foam wand to project wet, clinging foam
- Foam increases chemical contact time and effectiveness, and provides visual confirmation of coverage
- Foam impacts at a lower pressure than spray, allowing a pressure washer to be used on more delicate surfaces
- Use the fan pattern foam nozzle for wide coverage or the zero degree foam nozzle for increased range (up to 25')
- Quick connect the fan pattern sprayer nozzle to apply a chemical spray
- To rinse at full volume and pressure, simply open the bypass ball valve and quick connect your original rinse nozzle
- Your equipment is protected because no chemical passes through the pump
- Industrial-strength stainless steel construction, with chemical resistant wetted components, stands up to tough conditions and constant use - Built to last!
- Available with fewer chemical pickups (#969751, 969752, 969753)
- See Lafferty high pressure applicators in [Catalog 3](#) and [Catalog 13](#)

Includes

- Stainless steel mounting base
- Machined stainless steel bypass injector body with 3/8" inlet
- 20 color-coded precision metering tips to set dilution ratios
- High pressure bypass ball valve & 4 chemical ball valves
- 3/8" quick connect set to connect injector discharge to user-supplied hose
- 1/4" quick connect machined stainless steel airless foam wand with fan and zero degree nozzles
- 1/4" quick connect fan pattern spray nozzle

OPTIONS

Stainless Steel Hose Racks

Large Stainless Steel Hose Rack # 224150

Stainless Steel Jug Racks Available

Safe Flow Lid™ for 1 Gallon Jugs

Lid, Suction Tube, and Strainer # 709101

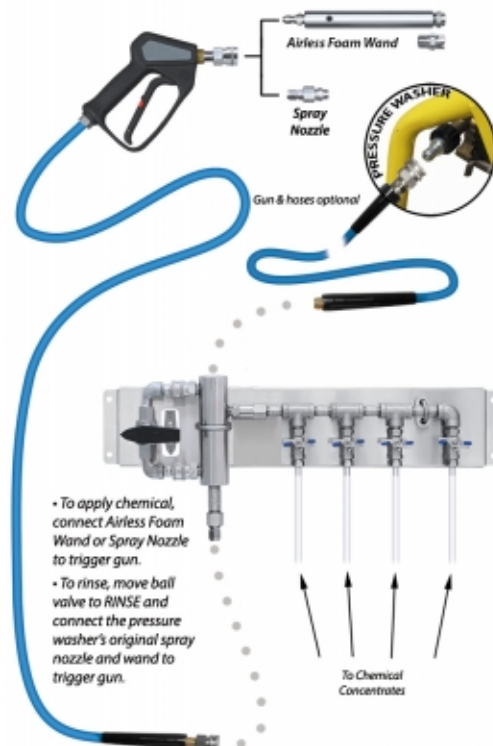
Pressure Washer Hose & Trigger Gun

HP 3/8" x 50' Hose & Trigger Gun Kit # 807069

Inlet Jumper Hose

Hose, 3/8" x 6', High Pressure # 195006

Hose, 3/8" x 15', SS, BNM, High Pressure # 195015SS



REQUIREMENTS

Water Temperature

up to 180°F

Pressure Washer

3.5 - 5.5 GPM

Discharge Hose

3/8" ID minimum

Up to 200' length

APPLICATIONS

- House and Roof Cleaning
- Agriculture/Horticulture
- Vehicle Wash
- Food & Beverage
- Industrial
- And Many Other Applications!

Lafferty
EQUIPMENT MANUFACTURING LLC
CFS TECHNOLOGIES

1.501.851.2820 | 1.800.999.2820
www.laffertyequipment.com